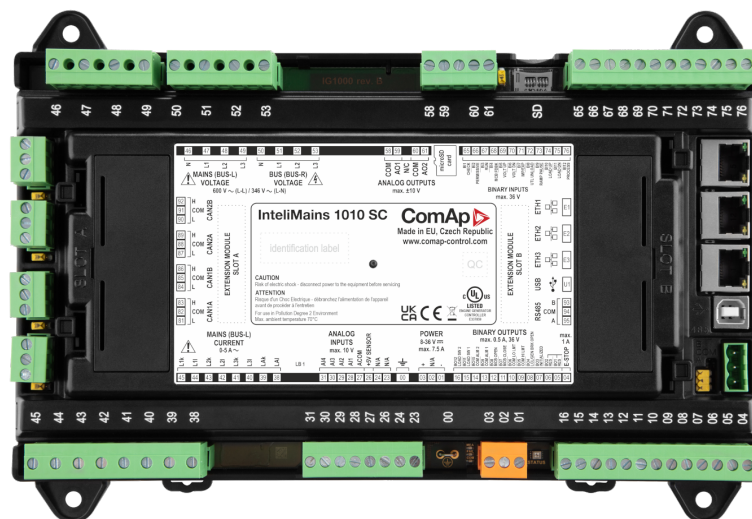


InteliMains 1010 SC



Order code: IM31010SCBB

Datasheet

Mains/Utility and tie breaker controller for switchgear applications

Product description

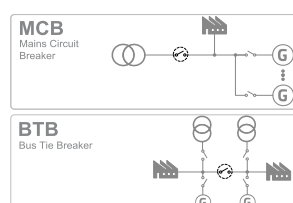
The InteliMains 1010 SC is a state-of-the-art mains/utility and bus tie breaker controller, for use in concert with the InteliGen 1000 SC paralleling generator synchronizer and load sharing controller. The InteliMains 1010 SC is ideal for control systems where an external PLC is used to dictate the system sequence of operation. Designed to simply “do what it’s told”, the InteliMains 1010 SC is used wherever synchronization is needed, it actively synchronizes InteliGen 1000 SC equipped generators to parallel with the utility/mains or connect multiple generator bus segments, greatly simplifying the system PLC control logic. The InteliMains 1010 SC provides revenue-grade mains/utility supervision and protection, with advanced decoupling protections like vector shift and ROCOF.

Key features

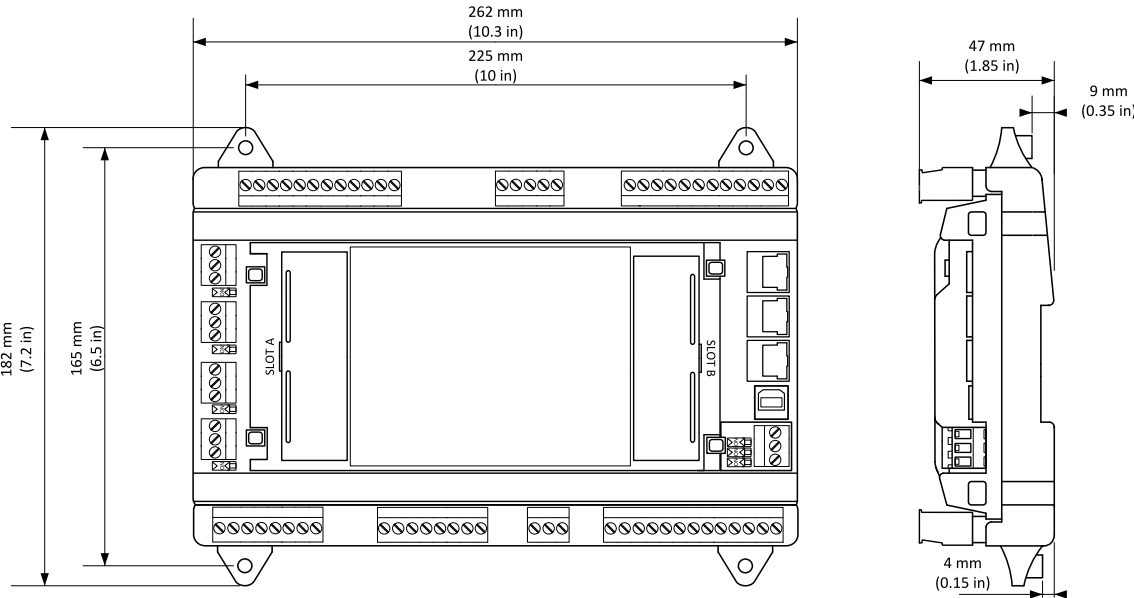
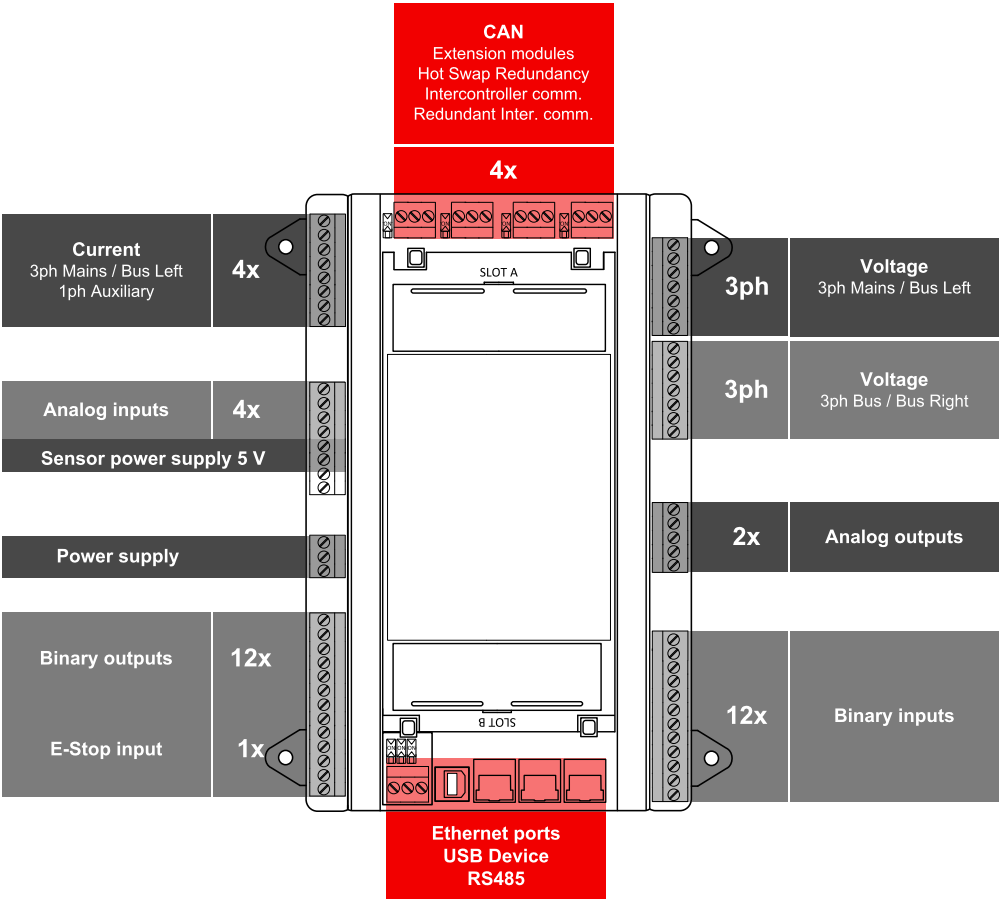
- Capable to soft transfer or open transfer the load between generators and mains / utility.
- Compatible with with the InteliGen 1000 SC for control of gen-set/generator breakers, up to 64 controllers can be combined in a system.
- Pre-programmed functions allow fast and easy system setup.

- True RMS voltage and current measurement with .25% accuracy; power calculation to .50% accuracy.
- Cybersecure remote control and monitoring to ANSI/ISA-62443 standard.
- Redundant CAN inter-controller communication.
- Redundant controller hot-swap in <10ms.
- Internal PLC functionality with easy-to-use PLC Editor, for simple and fast creation of specific logic for local control when desired (ex. local load shed/restore).
- Modbus master optional software key allows easy integration of Modbus-based devices for data sharing/control.
- Ethernet communication networks for local and remote monitoring options, with connected clients split into “trusted” and “untrusted” zones.

Application overview



Terminals and dimensions



Technical data

Power supply

Power supply range	8-36 V DC
Power consumption	16 W
RTC battery	Replaceable, type CR1632 3V
Fusing power	8 A
Consumption	2.5 A Controller + 10 x 0.5 A BOUts
Fusing E-STOP	1.2 A
Max. Heat Dissipation	16 W

Operating conditions

Operating temperature	-40 °C to +70 °C
Storage temperature	-40 °C to +80 °C
Operating humidity (norm 60068-2-30)	25/55°C, 48hours,95 % non-condensing (EN 60068-2-30)
Protection degree	IP20
Vibration	5-25 Hz, ± 1.6 mm 25-100 Hz, a = 4 g
Shocks	a = 500 m/s ²
Surrounding air temperature rating 70 °C.	
Suitable for pollution degree 2.	

AC Current measurement

Measurement inputs	3ph Mains (Bus Left) current 1ph Bus (Bus Right) current (Auxiliary current)
Measurement range	1 A / 5 A
Maximum continuous current	2 A / 10 A
Allowed overload	18 A for 15 sec.
Accuracy	±3 mA / ±15 mA for 0.0 to 0.4 A / 0.0 to 2.0 A 0.75 % of value for 0.4 to 1.0 A / 2.0 to 5.0 A
Frequency range	40-70 Hz (accuracy 0.002 %)
Input impedance	0.68 MΩ ph-ph , 0.34 MΩ ph-n

AC Voltage measurement

Measurement inputs	3ph-n Mains (Bus Left) voltage 3ph-n Bus (Bus Right) voltage
Measurement range	115 V ph-N / 200 V ph-ph suitable also for VTs output 231 V ph-N / 400 V ph-ph UL, cUL: 346 V ph-N / 600 V ph-ph
Linear measurement and protection range (maximal voltage)	433 V ph-N / 750 V ph-ph
Accuracy	0.25 %
Frequency range	40-70 Hz (accuracy 0.002 %)
Input impedance	0.72 MΩ ph-ph , 0.36 MΩ ph-n
Measurement category CAT III, overvoltage category III	

E-Stop

Physically disconnects BO 1 & BO 2 from power supply.

Binary inputs

Number	12, non-isolated
Close/Open indication	0-2 V DC close contact 6-36 V DC open contact
Configurable	Pull-up / Pull-down
Pulse input	Bin 9 and 10 max. 50 Hz

Binary outputs

Number	12, non-isolated
Max. current	0.5 A
Switching to	Positive supply terminal

Analog inputs

Number	4, switchable (R/U/I)
Range	R = 0-10000 Ω; U = 0-10 V; I = 0-20 mA
Accuracy	R: 2 % from value for 0-250 Ω R: 4 % from value for 250-2500 Ω R: 6 % from value for 5000-10000 Ω U: 1 % from value ±100 mV I: 1 % from value ±200 uA

Analog output 1

Protection	Reinforced isolation
Type	Switchable: U ±10 V, I ±20 mA, PWM: 0 V/5 V
Accuracy	U: 1 % from value ±100 mV I: 1 % from value ±200 uA

Analog output 2

Protection	Basic isolation
Type	Switchable: U ±10 V, I ±20 mA, PWM: 0 V/5 V
Accuracy	U: 1 % from value ±100 mV I: 1 % from value ±200 uA

Communications

USB Device	Basic isolation, USB type B
RS 485	Basic isolation
ETH1 ETH2 ETH3	10/100 Mbit
CAN 1A CAN 2A CAN 1B CAN 2B	Basic isolation, 1000/250/50 kbps , nominal impedance 120 Ω
Protocols	Modbus RTU/TCP SNMP V1/V2c/V3

Weight

Controller	750 g
Package	920 g

Controller handles 300 million records into the History, which represents roughly 1 record per second during 9,5 years. Shall be the History recording faster, the controller lifetime will become smaller.

Available external displays

Product	Description	Order code
InteliVision 5.2	5" TFT external display with 800x480 px resolution	RD2IV5BxBAA
InteliVision 10Touch	10.1" Touchscreen display unit with 1280 x 800 px resolution	RD1IV10TBPF
InteliVision 13Touch	13.3" Marine certified display unit with 1920 x 1080 px resolution	RD1IV13TBME
InteliVision 18	18.5" Touchscreen display unit with 1366 x 768 px resolution	RD31840PBIE

Available CAN modules

Product	Description	Order code
Inteli AIN8	8 Analog Input Channels and 1 RPM/Impulse Input Module	I-AIN8
Inteli AIN8TC	8 Analog Input Channels for termocouples measurement	I-AIN8TC
Inteli AIO9/1	4 Analog Inputs for differential voltage measurement, 4 Analog Input equipment channels, 1 Analog Input for resistance measurement and 1 Analog Output	I-AIO9/1
Inteli IO8/8	16 Configurable Binary Inputs/Outputs and Analog Outputs Module	I-IO8/8
IGL-RA15	Remote Annunciator w/ 15 programmable LEDs	EM2IGLRABAA
IGS-PTM	4 Analog Inputs, 1 Analog Output, 8 Binary Inputs and 8 Binary Outputs	IGS-PTM
I-AOUT8	8 configurable analog outputs	I-AOUT8
IS-AIN8	8 configurable analog inputs	IS-AIN8
IS-BIN16/8	16 galvanically separated inputs, 8 binary outputs, 2 pulse inputs	IS-BIN16/8
ECON-4	Digital speed governor dedicated for speed control of gas or diesel engines	ECON-4
InteliFieldbus Gateway	Modbus TCP/RTU Communication gateway	CM1IFGATBBB
InteliGateway 300	Communication gateway with configurable interfaces between Modbus TCP/RTU, ComAp CAN, WebSupervisor and InteliScada protocols allowing user-defined interconnection of all attached devices	CM2GW300BAB
InteliGateway 301	Similar options as InteliGateway 300 with 4G cellular connectivity and GNSS capability.	CM2GW301BAB
I-CR	CAN Repeater Module, compatible when using 32C/8C CAN Intercontroller Comm Mode	I-CR





Functions and protections

Support of functions and protections as defined by ANSI (American National Standards Institute):

Description	ANSI code	Description	ANSI code
Multi-function device	11	Overcurrent IDMT	51
Speed and frequency matching device	15	AC circuit breaker	52
Data communications device	16ECFM+16SC	Power factor	55
Synchronizing-check	25	Overvoltage	59
Automatic Synchronizing Relay	25A	Pressure switch	63
Undervoltage	27	Liquid level switch	71
Annunciator*	30	Alarm relay *	74
Overload	32	Vector shift	78
Undercurrent	37	Reclosing relay	79
Current unbalance	46	Overfrequency	81H
Voltage unbalance	47	Underfrequency	81U
Temperature monitoring	49T	ROCOF	81R
Overcurrent	50/50TD		

* extension module IGL-RA15 required

Certifications and standards

<ul style="list-style-type: none"> ➤ EN 61000-6-2 ➤ EN 61000-6-4 ➤ EN 61010-1 ➤ EN 60255-1 ➤ EN 60529 (IP20) 	<ul style="list-style-type: none"> ➤ EN 60068-2-1 (-40 °C/16 h) ➤ EN 60068-2-2 (70 °C/16 h) ➤ EN 60068-2-6 (2÷25 Hz / ±1,6 mm; 25÷100 Hz / 4,0 g) ➤ EN 60068-2-27 (a=500 m/s²; T=6 ms) ➤ EN 60068-2-30 (25/55 °C, RH 95%, 48 h) 	<ul style="list-style-type: none"> ➤ UL6200 ➤ UKCA 	   
---	---	--	---



E-mail: info@comap-control.com
 Web: www.comap-control.com

ComAp 
 The heart of smart control

List of SW Key Features

SW Key Feature	Order Code
Modbus client	SKMODBCLI01
Hot Swap Redundancy	SKHOTSWAP01

Supplier's Declaration of Conformity 47 CFR § 2.1077 Compliance Information

Unique identifier: IM31010SCBB

Responsible Party:

Kevin Counts

10 N Martingale Rd #400

60173 - Schaumburg, IL

USA

Tel: +1 815 636 2541

E-mail: info.us@comap-control.com

FCC Compliance Statement

This device complies with Part 15 of the FCC Rules. Operation is subject to the following two conditions: (1) This device may not cause harmful interference, and (2) this device must accept any interference received, including interference that may cause undesired operation.



E-mail: info@comap-control.com

Web: www.comap-control.com

ComAp 
The heart of smart control